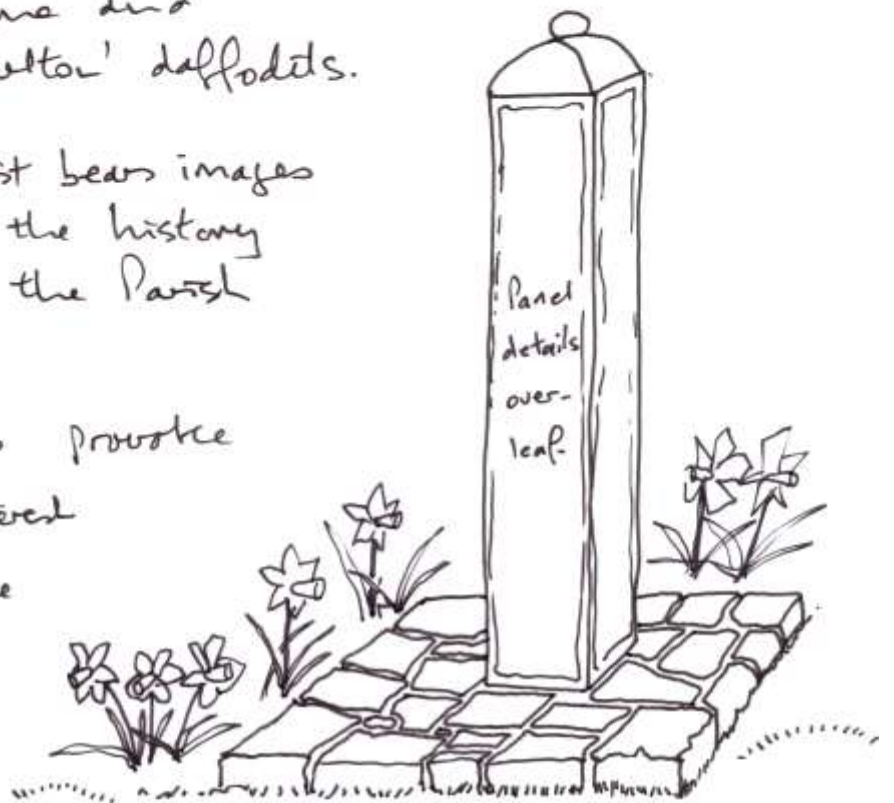


Carlton Village Sign Project 2002

The design concept is of a decorative post, set in a plinth made of recycled Carlton Stone and surrounded by 'Carlton' daffodils.

Each side of the post bears images intended to evoke the history and ambience of the Parish of Carlton.

The intention is to provoke curiosity, and interest and pride in the Parish.



The materials used must be durable and of high quality, and the sign must require only minimal maintenance.

The post might be of oak with a lead capping and carved, in which case the images would need to be selected and stylised.

The post might be made of oak with cast metal or ceramic panels set into each side.

The post might be entirely made of ceramic material, and painted and glazed.

Submitted by Chris Peck, 7 Main Street. 30.1.2002

'VANISHED' CARLTON

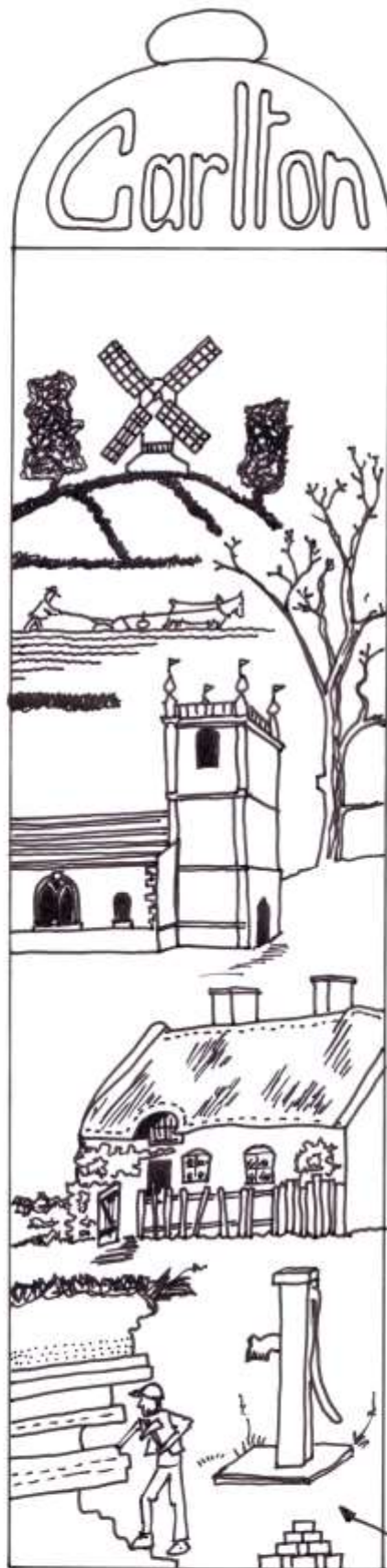
Windmill.
(Type unknown, but probably a post-mill).

Horse-drawn plough.

Church 1764
(from Nicholls)

Carlton stone
quarry.

M^r
Quarryman with
pick-hammer.



head post-cap with
moulded lettering.

Elm trees in silhouette.

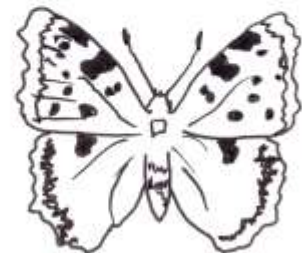
Many small fields.

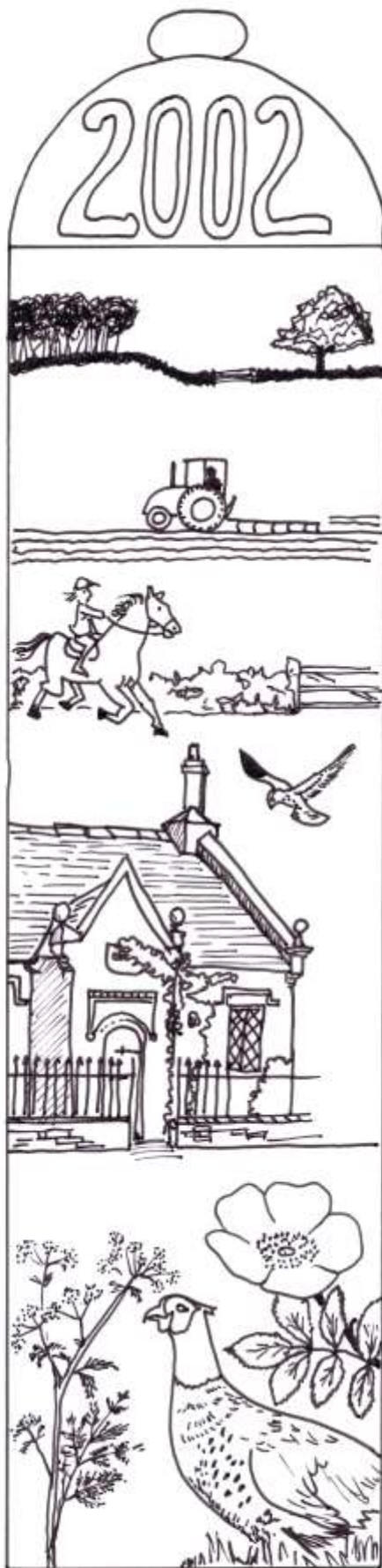
English elm tree.

Thatched cottage.
(from old photo of
Carlton Green)

Village pump.

Large tortoiseshell
butterfly.
(no longer occurs in
W. Leicestershire)





Wood or skyline

Hedgerow with oak tree.

Tractor ploughing.

Few hedges.

Horse rider.

Windhover.

Old school cottage.

Dog rose.

Cow parsley.

Pheasant.



Buzzard

St. Andrews church

Rabbits

Peacock butterfly.

Flowering cherry.
'Kanzan'

Irish yew tree

'Carlton' daffodil
NB. Division II

CARLTON VILLAGE SIGN 2002

Suggestion

That a mystery or puzzle sign be produced which includes images of buildings and other structures in the Parish which give clues, provoke speculation, or otherwise 'illuminate' our sense of place and history.



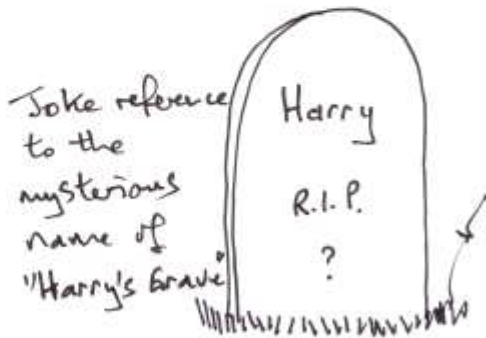
Belt or strap refers to the rhyme on the pub sign & the associated tradition.



Benchmark or church tower.

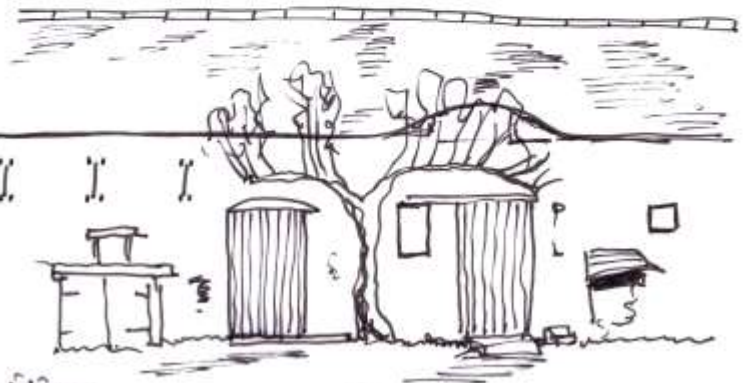


Symbols from old letter box.



Joke reference to the mysterious name of 'Harry's Grave'

Harry
R.I.P.
?



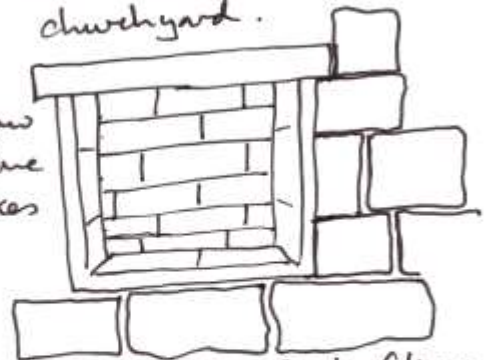
Barn at Manor House from evokes lost Carlton Manor.

Number plate from Carlton Bridge.



Skull and crossbones from old gravestone in churchyard.

Bricked-up smoke window from the Stone House evokes history.



Adjacent wall illustrates Carlton Stone.

Plaque from wall of 'The New House'





Old gradient post from railway.



Old reformatory bell on Westhelds Farm.

Indenture symbolises origins + purpose of Carlton Charity Lands

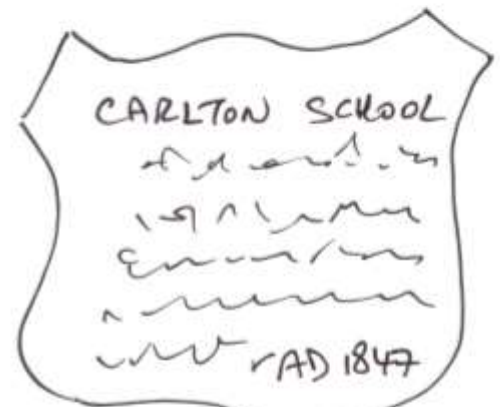
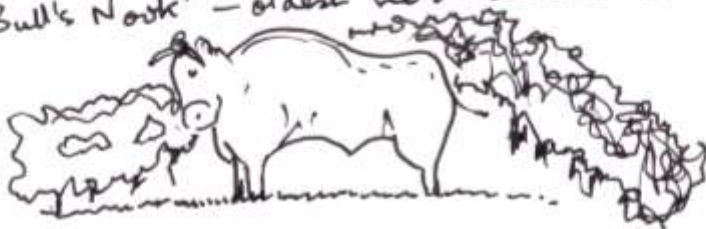


14 MILES
Distance number from old Parish mile Post.



Midland Railway boundary marker from Ashby Canal - industrial history

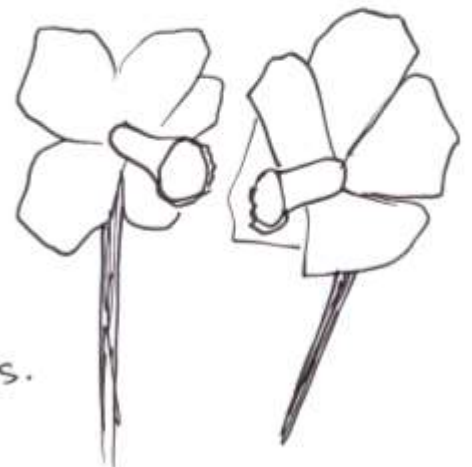
Bull in corner of field symbolises the "Bull's Nook" - oldest field name in Carlton



Plaque above door of old village school.



Hall Terrace - cottages without doors to road evoke Carlton Hall.



'Carlton' daffodils.

From Chris Peat, 7 main st, Carlton.